



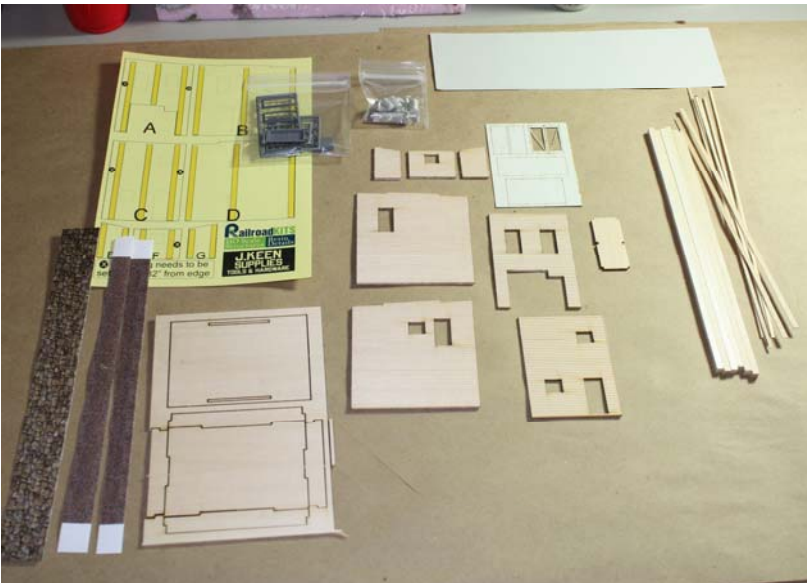
Thank you for purchasing J. Keen Supplies by Railroad Kits. This is a great first structure if you've never built a wood kit, or if you're a master builder you'll enjoy it too. J. Keen Supplies was designed by my friend Doug Foscale of Fos Scale Models for his DVD "Build a Wood Structure From Start to Finish" – I suggest you buy the DVD! It is filled with great information and covers from building to scenery!

Of course you'll read these instructions before you attempt to build the kit, Right?

The basic tools required to build J Keen are something every model builder should have in his tool box. There are tools used in these instructions that are not listed below. They are optional and not everyone will have them.

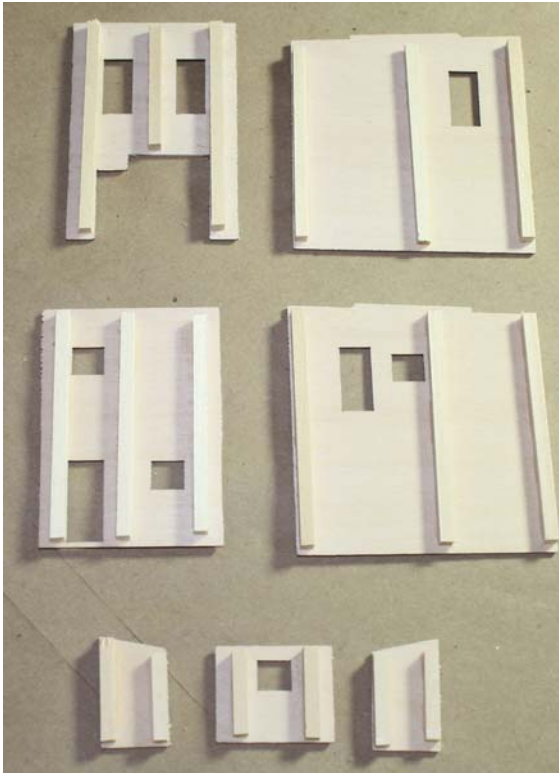
- #11 Hobby Knife, and plenty of new blades. Change them often!
- An HO metal scale ruler
- A white or yellow glue. We use Pacer's Formula 500 Canopy Glue for everything in this kit.
- An assortment of paint brushes
- Paints

Check your kit contents to be sure you have all the parts required in J. Keen Supplies:



Lets Get Started!

STEP ONE – BRACING

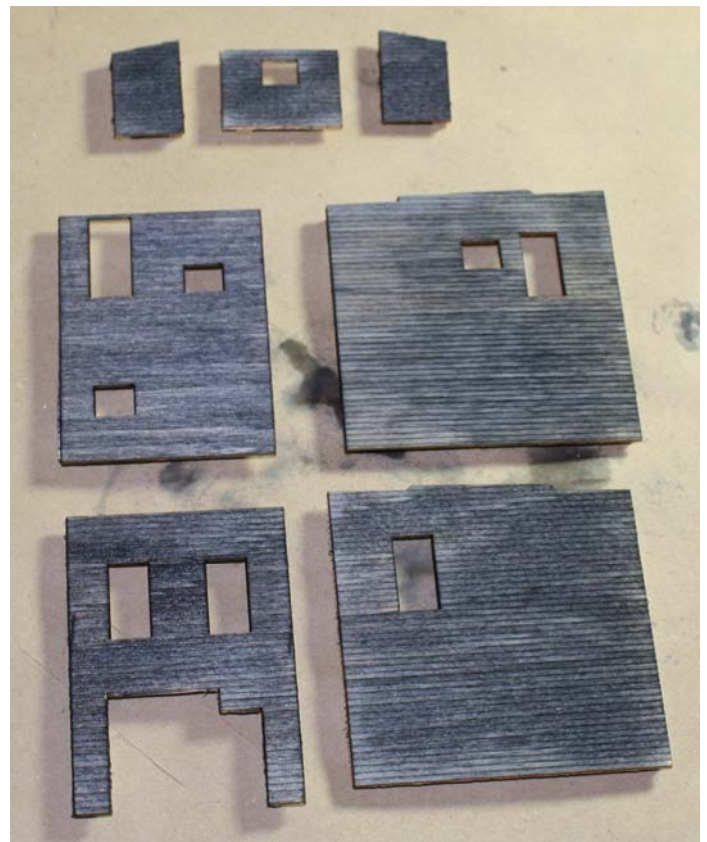
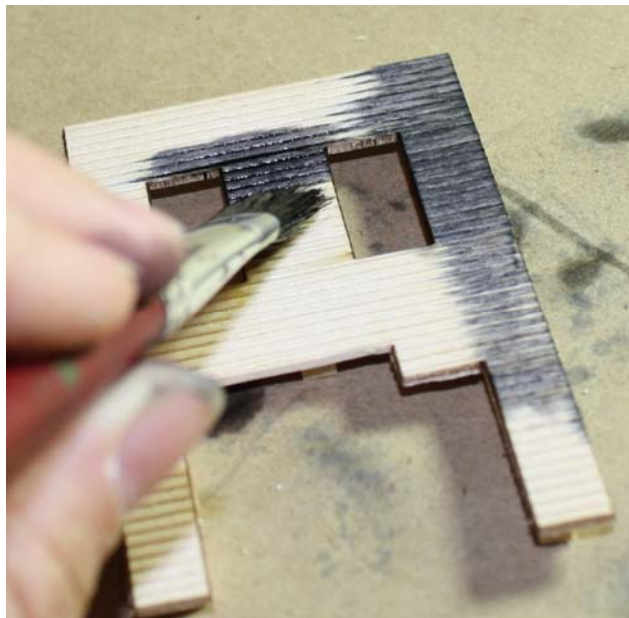


Brace the clapboard walls according to the included diagram. We use 5/32" strip wood for this. Bracing the walls is an important step as it will prevent the wood from warping.



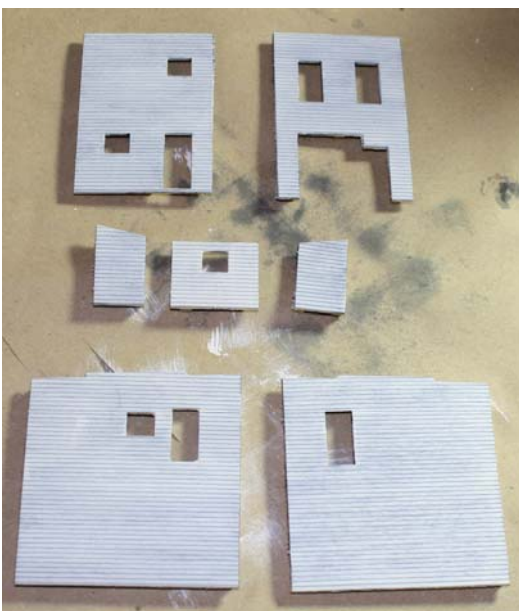
STEP TWO (OPTIONAL) – A&I STAIN

We prepare the walls with a coat of A&I mix. This is alcohol and india ink. We used a very dark mix on our kit as shown:



STEP THREE – PAINT THE KIT

We use craft paints that are available at arts & crafts stores, as well as larger department or “box” stores like Wal-Mart.

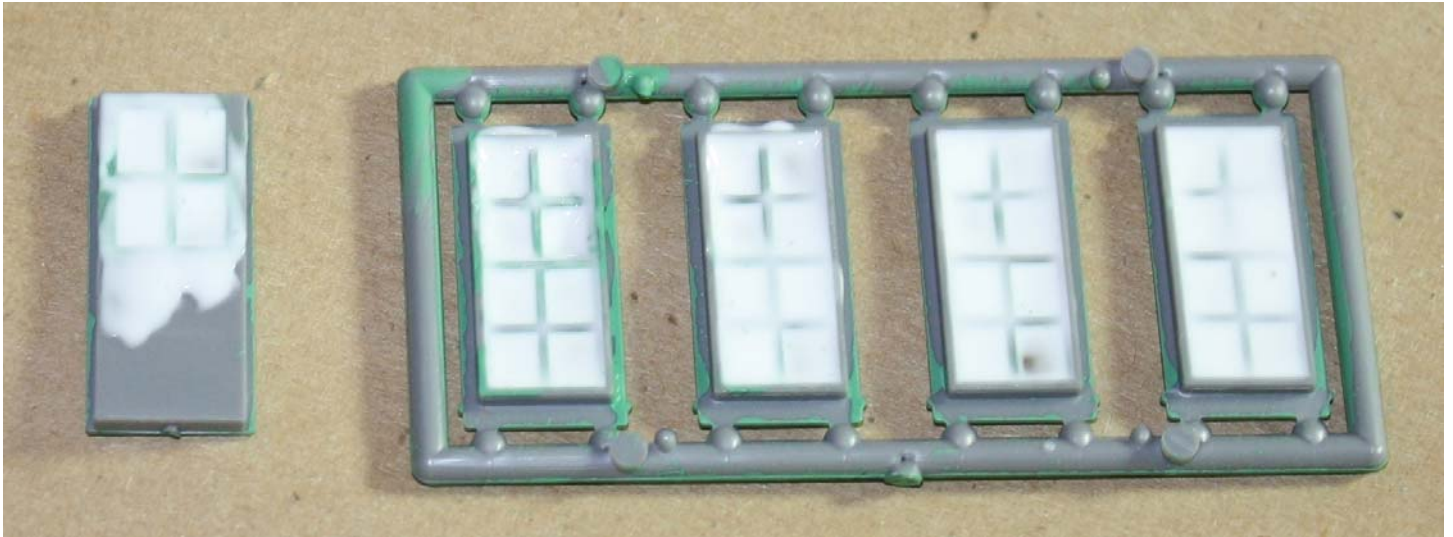


You can see here that we lightly painted the clapboard walls with white. Because we went with a very dark coating/mixture of A&I in the previous step, the result is a silvery gray faded look.

The doors, windows and 1/16th trim are a blend of inexpensive acrylic colors. We also painted the Laserboard freight door the same green. (not shown)

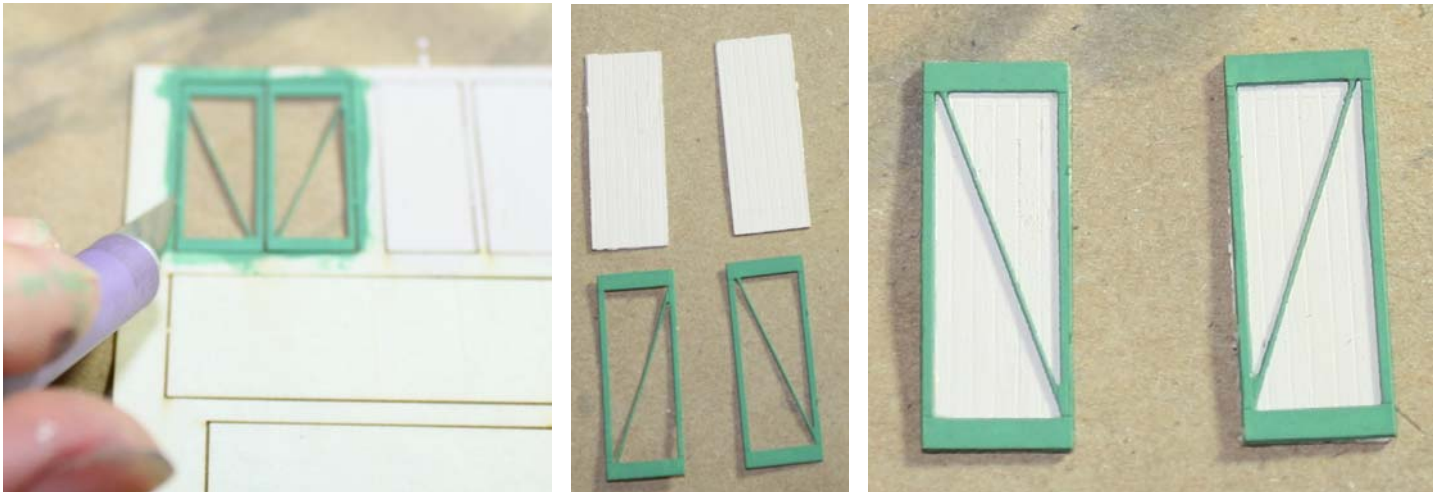
STEP FOUR (OPTIONAL) – WINDOW GLASS

If you're using Canopy Glue, or you have a favorite product for simulating window glass, do that now.



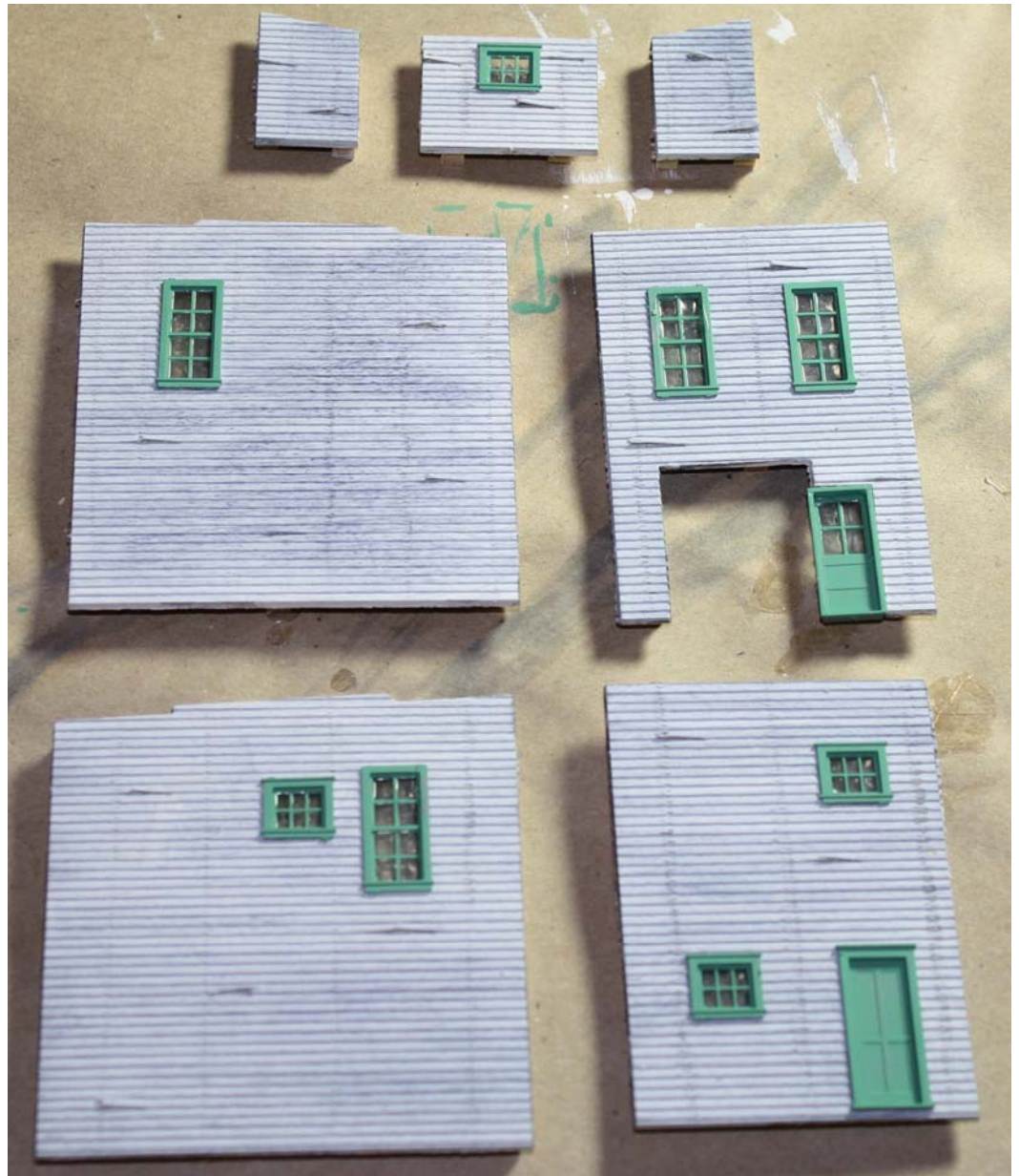
STEP FIVE – ASSEMBLE THE FREIGHT DOORS

Carefully cut the freight door pieces from the Laserboard. Glue the front trim to the backs of each door. See the steps pictured below; Cut Out, Separate, and Glue Together



STEP SIX – GLUE THE DOORS AND WINDOWS INTO THE WALLS

The image on the next page shows the doors and windows being set in place. If you prefer to weather or age your walls be "breaking" clapboards, or adding nail holes, do that before the doors and windows are in place. Looking closely at the photo's you'll notice our broken boards and nail holes too. Also notice how nice the Canopy Glue is when used as glass in the windows & door:

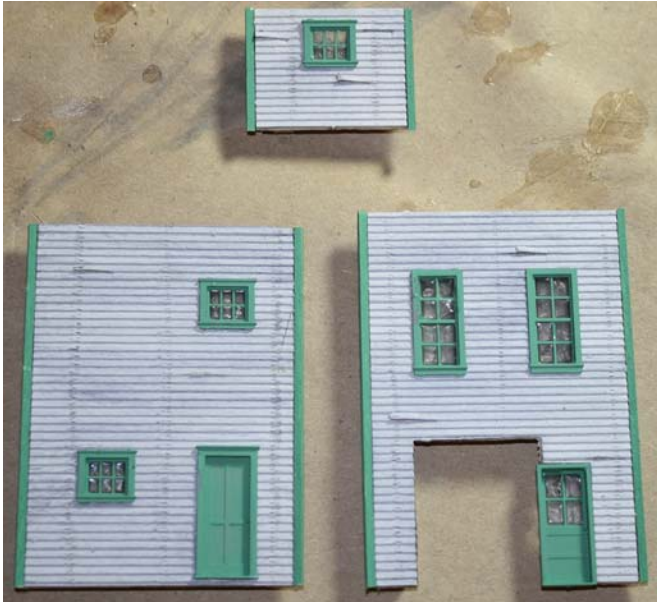


STEP SEVEN – (OPTIONAL) J. KEEN SIGN

The black and white J. Keen Supplies sign is made to fit on the side wall. Be sure you don't put it on the side that you'll be installing the annex addition on.

Lightly sand the back of the sign with a fine grit sand paper. You'll want to get the paper as thin as you can. Be careful not to rip it! When you begin to see the color from the front of the sign bleed through, that's thin enough. Glue it to the wall, and use your finger nail to press the sign into the clapboard. Again, Carefully! The sign will be very fragile at this stage. Pressing it into the clapboard will make the sign appear to be painted on.

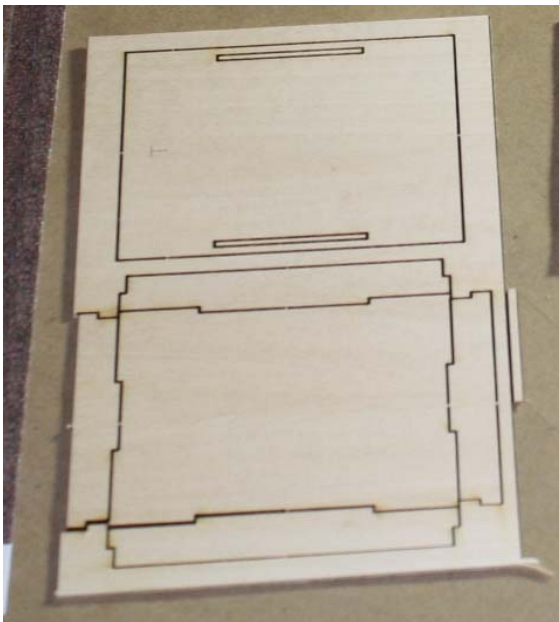
STEP EIGHT – CORNER TRIM



For trim we use 1/16" stripwood. The stripwood is the same thickness as the clapboard walls and is used to hide the seams where the corners of the walls join. If you didn't paint your 1/16th stripwood, do that before you attach them to the walls. You'll only need to trim the sides of three walls as shown here.

STEP NINE – FOUNDATION

J. Keen features a "Tab & Slot" foundation. Assemble them as shown below. The first photo shows the foundation piece, the second shows three of the four sides glued on. You can glue all four sides on.



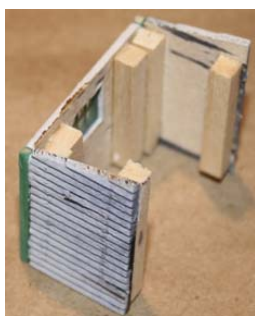
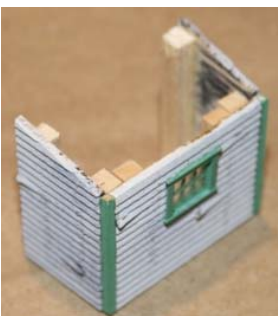
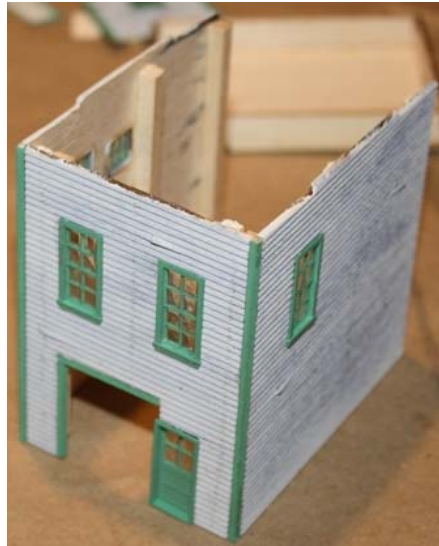
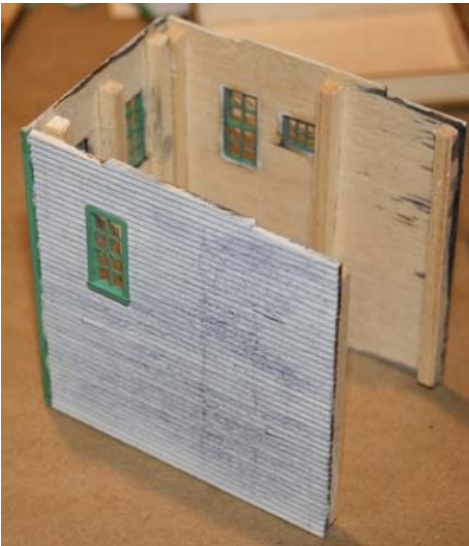
Next, use the included paper (brick or stone printing) and wrap it around the base. The brick paper is glued, the stone is peel-and-stick. Use either one for the look you prefer. The image on the next page shows the completed foundation base:



The above images show the foundation being wrapped with brick paper, and the completed foundation. If you intend on modelling the building with the freight doors open, Paint the base the color you want the floor inside the building to be. A little bit of a very fine, sifted dirt would look great too.

STEP TEN – THE BUILDING ASSEMBLY

I'll show you a few pictures, but this step is pretty simple. Glue the four walls together. Keep them square! Use elastic bands or metal weights to hold the building together while the glue dries. You can also glue the three walls of the annex together now too.

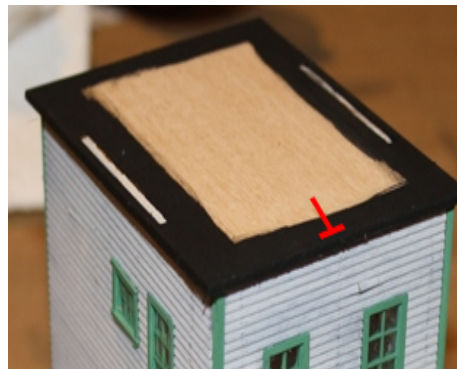


STEP ELEVEN – FRAME AND INSTALL THE FREIGHT DOORS

Using the 1/16th stripwood, trim out the freight door. Then glue the two freight doors on. These can be modelled opened, closed, or anyway you'd like.



STEP TWELVE – ROOF PANEL



The roof panel should be painted before you install it. We painted this one black, just around the edges. The roof card is marked with a "T" to be sure you put it on properly.

STEP THIRTEEN FOUNDATION & ANNEX

The building gets glued to the foundation. The annex can be glued just about anywhere you'd like. We choose to put it on the left side of the building, about 3/8" from the rear of the building. This is why you need to be sure that you put the sign on the proper side in Step Seven. Knowing where this annex is going before you put that sign on the wall is very important! I'm glad you read these instructions all the way through, at least once before you started building the model! The pictures for this step are on the next page.

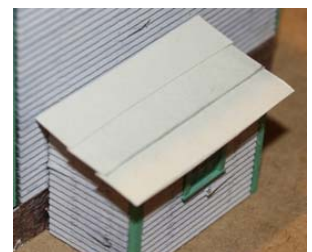


STEP FOURTEEN – ROOFING PAPER AND ANNEX ROOF

There is a short roofing video on RailroadKits.com in the instructions section that may be helpful if you've never done a roof before. We use paper to simulate a tar paper roof. The roofing paper should be trimmed to strips of about 3/8" wide. Start at the bottom, and work your way up, over lapping each course slightly. Stagger a few seams as shown below:.



Notice we've kept the courses fairly even. You can do this just by eye. If you are a little off, that'll be okay. Same with the edges. Slightly random. These types of roofs look good that way. If you prefer a different color roof, you can paint the sheet of roofing paper before you cut the 3/8" strips. The annex roof is Laserboard. You should paint it black (top and bottom) then glue it to the building. Apply the annex roofing paper the same way, from the lower portion upwards.



STEP FIFTEEN – THE DOCK

STEP SIXTEEN – THE DOCK ROOF



The roof over the dock is made from Laserboard. You'll notice the roof sheet is scored slight for the rafters. The lines make it easy to glue the rafters down nice and straight. We cut the ends of the 2x6 scale stripwood at angles and glued each piece down, using the scored lines as a guide.



This image from a completed model shows the rafters up close. You can see why cutting them at an angle creates a realistic look. We didn't paint them, just a wash of A&I works well here.

STEP SEVENTEEN – THE DOCK ROOF AND METAL WIRE SUPPORTS